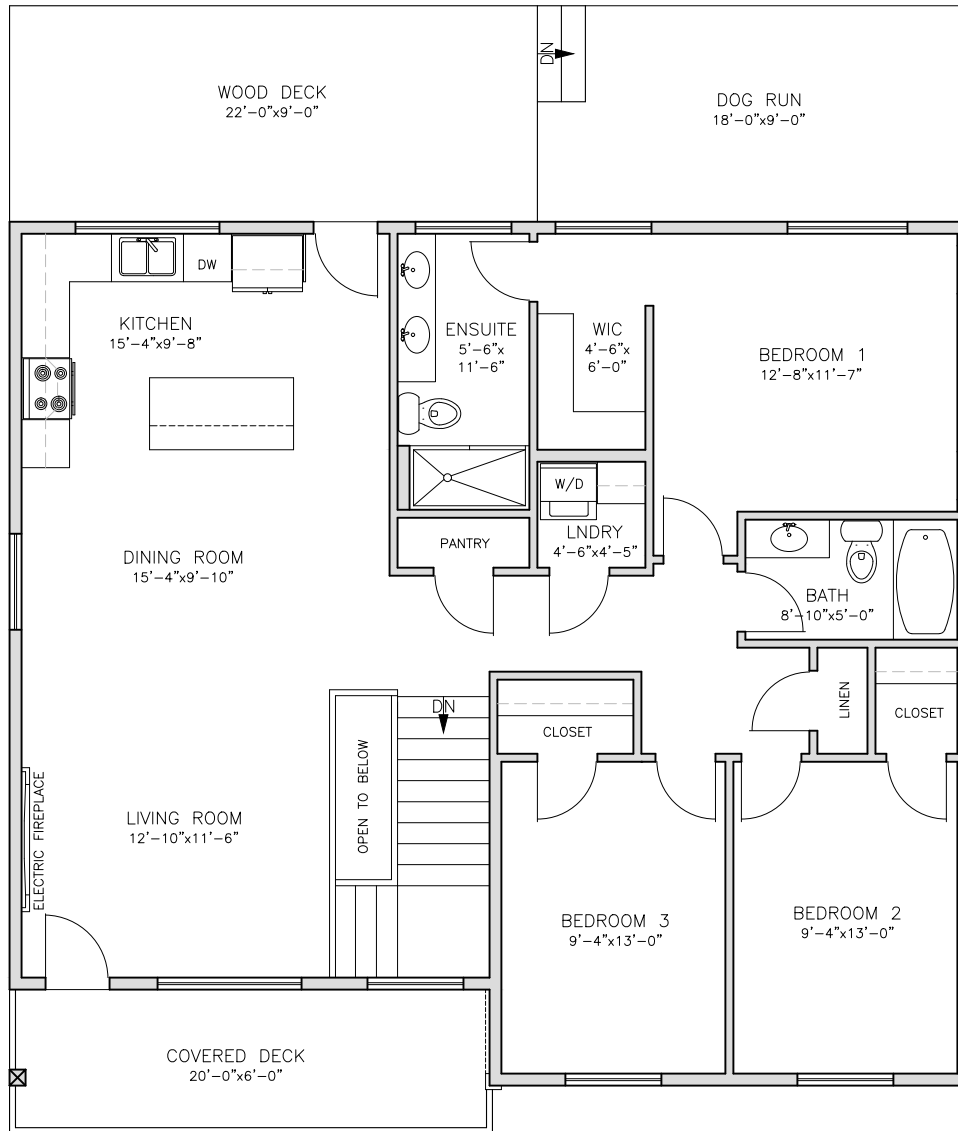


# 1917 PINE RIDGE MOUNTAIN LINK



**MAIN FLOOR PLAN**  
**1360 SQ FT**

**PROJECT BY:**



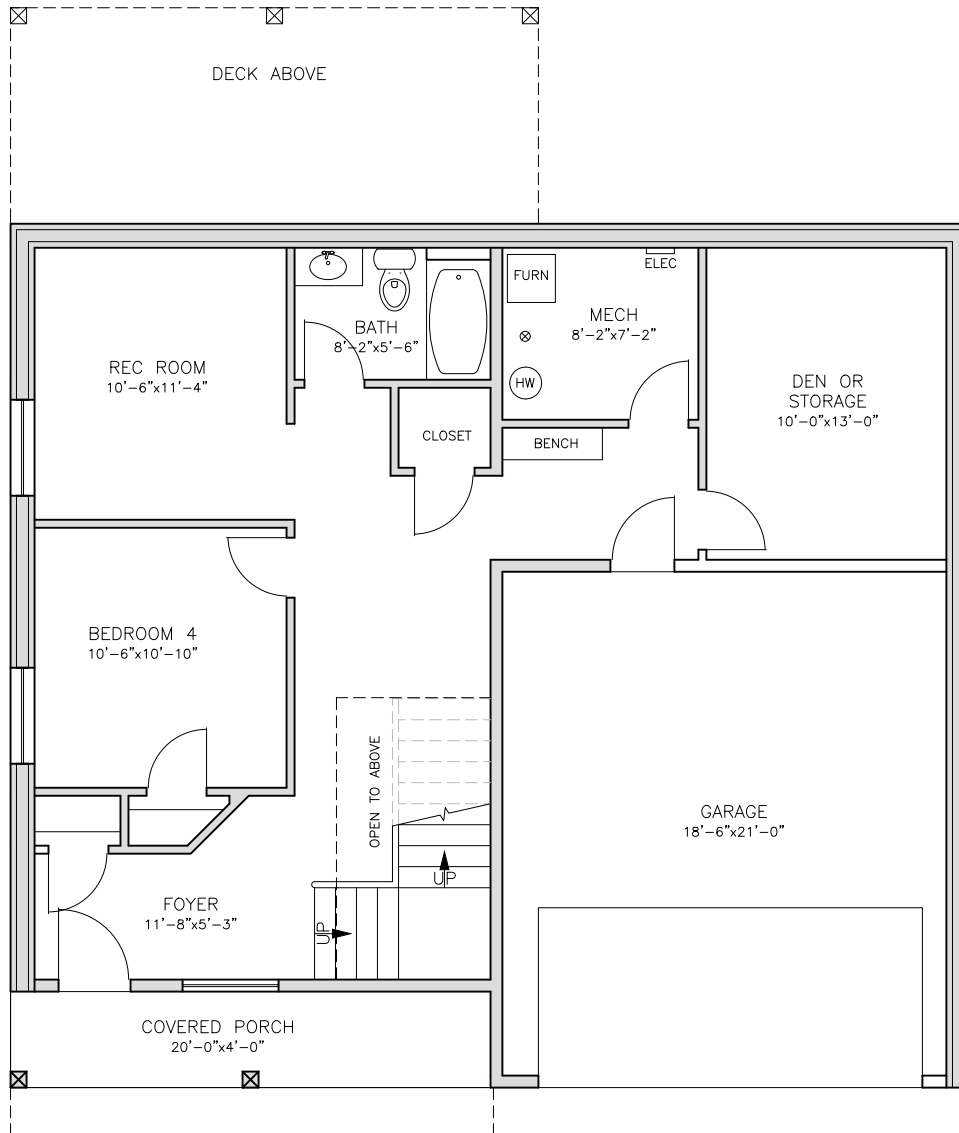
Developed by TRC Projects Ltd.  
We reserve the right to make modifications or changes as required during course of construction.  
Interior room measurements are given to the inside face of walls.  
Square footage is calculated based on the exterior building.

**BUILT BY:**



**CUSTOM BUILDING  
& RENOVATION**

# 1917 PINE RIDGE MOUNTAIN LINK



**LOWER FLOOR PLAN**  
**938 SQ FT**

**PROJECT BY:**



Developed by TRC Projects Ltd.  
We reserve the right to make modifications or changes as required during course of construction.  
Interior room measurements are given to the inside face of walls.  
Square footage is calculated based on the exterior building.

**BUILT BY:**



**CUSTOM BUILDING  
& RENOVATION**